

GD7 Quick Start Guide

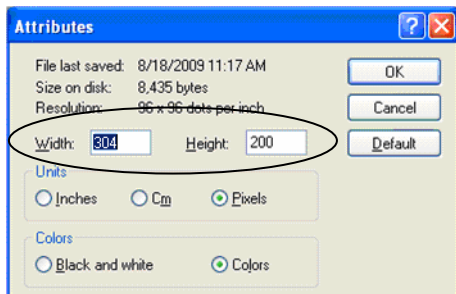
Before getting started, you will need...

1. The appropriate SD card is included with your display. Should you need additional cards, CRS recommends CRS P/N 520004, 512MB, as there may be card compatibility issues with off-the-shelf SD cards.
2. An SD card reader/writer for your PC (CRS P/N 770220). You will need to copy the images you wish to display to the SD card.
3. A graphic software tool that you are familiar with using. You may need to resize images and convert them to JPEG format. Microsoft Paint™ is a suitable tool.

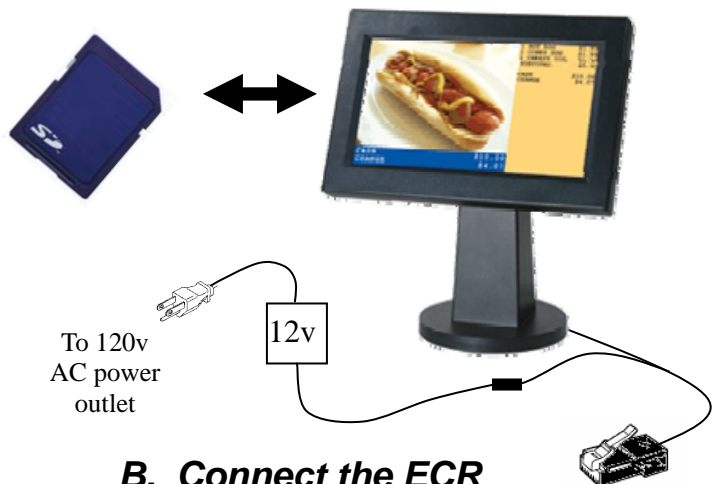
SAM4s Models Currently Supported: ER-285M (v1.027 or later), ER-390M (v3.4 or later), ER-65X Series (v10.8r), ER-5200M Series (v8.0 or later), SER-7000 Series, SPS-2000 (v3.00g27 or later), SPS-500 Series Hybrid ECRs (v1.00m or later).

A. Load Slide Show Images

1. Format the SD Card to **FAT32**.
2. Use color **JPEG** images.
3. The optimum image size is: **304** (w) x **200** (h) pixels.
4. Use Microsoft Paint, or another graphic software tool to resize your image if necessary. From Paint, choose *Attributes* from the *Image* menu to display the *Attributes* dialog box. Set size as required. If the image was another graphic format, be sure to “save as” in JPEG format.



5. Copy images to root of the SD card. Use a clean SD card—delete unnecessary files and folders.
Note: Images will display in alphabetical order by file name.
6. Insert SD card in slot on left-rear of display frame.



B. Connect the ECR

1. At the ECR, configure the selected port for **EPSON POLE DISPLAY** or **POLE DISPLAY-AP701** when using new software versions.
2. Set port parameters to **9600 BAUD**, **8**-data bits, **1**-stop bit and parity **NONE**.
3. Connect the RJ45 connector from the POS 7“ GD to the appropriate RS232C port on ECR.
4. Connect the power adaptor to a 120v AC outlet; connect the adaptor the power connection of the Y-cable coming from the POS 7” GD display.
5. After connection is completed, **power the ECR off and on again**. The digital frame will scroll through images at approximate 10 second intervals when the ECR is idle. Transaction information will display in a fixed format on the right-side of the screen.